

M12

1210 ... 0...

Cordsets M12



Actuator/sensor cordset with overmolded connector

Cable end 1:

M12 male, straight, A-coded, IP67

Cable end 2:

blunt cut

Cable:

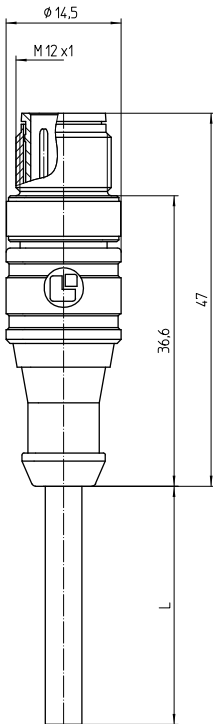
PVC, black

Approvals:



M12

1210 ... 0...



Environmental conditions

Temperature range -25 °C/+80 °C

Materials

Insulating body	TPU GF, HB according to UL94
Contact pin	CuZn, pre-nickel and gold-plated
Overmolding/handle	PVC, HB according to UL94
Knurled screw	CuZn, nickel-plated

Mechanical data

Mating cycles	≥ 100
Insertion force	≤ 10 N ¹
Withdrawal force	≤ 15 N ¹
Protection class	IP67 ²

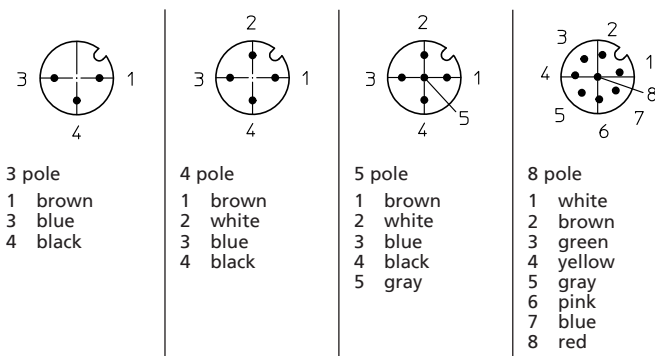
¹ measured with a proper counterpart

² according to IEC DIN EN 60529, only in locked condition with an appropriate counterpart

Connected cable

Outer jacket PVC, black

Pin assignments for male M12 connectors, A-coded, front view



Electrical data (at T_{amb} 20 °C)

Contact resistance	≤ 10 mΩ
Rated current	4 A (3–5 poles) 2 A (8 poles) 1.5 A (12 poles) (T _{amb} 40 °C)
Rated voltage	250 V AC/DC (3–4 poles) 60 V AC/DC (5 poles) 30 V AC/DC (8–12 poles)
Rated impulse voltage	2500 V (3–4 poles) 1500 V (5 poles) 800 V (8–12 poles)
Material group	I (IEC)/0 (UL) (CTI = 600)
Insulation resistance	> 100 MΩ

Associated products

Counterparts

☞ 1200 ... 0...	☞ 1200 ... 3...	☞ 1205 ... 0...
☞ 1205 ... 3...	☞ 1206 ... L1 0...	☞ 1206 ... L1 3...
☞ 1206 ... L2 0...	☞ 1206 ... L2 3...	☞ 1210 1200 ... 0...
☞ 1210 1200 ... 3...	☞ 1210 1205 ... 3...	☞ 1210 1206 ... L1 0...
☞ 1210 1206 ... L1 3...	☞ 1210 1206 ... L2 0...	☞ 1210 1206 ... L2 3...
☞ 1220 ... T16CW ...	☞ 1220 ... T20CW100 ...	☞ 1220 ... T20CW101 ...

M12

1210 ... 0...

-
- | | | |
|---------------------------------------|---------------------------------------|---------------------------------------|
| 1220 ... T20CW102 ... | 1220 ... T20CW103 ... | 1220 ... T20CW104 ... |
| 1220 ... T20CW105 ... | 1221 ... T16CW100 ... | 1221 ... T9CP |
| 1240 ... T...CR | 1245 ... T9CR | 5500 04DL1 3... |
| 5500 04L1 3... | 5500 08DL1 3... | 5500 08L1 3... |
| 5512 04DL1 | 5512 04L1 | 5512 08L1 |

Accessories

- | | | |
|---------------------------|---------------------------|---------------------------|
| 9912 CPM0 | 9912 MRBU | 9912 MRGN |
| 9912 MRRD | 9912 MRWH | 9912 MRYE |
-

M12

1210 ... 0...

Designation	Pole Number	Connected Cable	PU (Pieces)	MDQ (Pieces)	Dimensions L (mm)
1210 03 001 2m	3	PVC, black, 3 x 0.34 mm ² (AWG 22), 910001, UL-style 2464	5	10	2000
1210 04 002 2m	4	PVC, black, 4 x 0.34 mm ² (AWG 22), 910002, UL-style 2464	5	10	2000
1210 04 002 5m	4	PVC, black, 4 x 0.34 mm ² (AWG 22), 910002, UL-style 2464	1	10	5000
1210 04 002 10m	4	PVC, black, 4 x 0.34 mm ² (AWG 22), 910002, UL-style 2464	1	10	10000
1210 08 004 2m	8	PVC, black, 8 x 0.25 mm ² (AWG 24), 910004, UL-style 2464	5	10	2000

Packaging:
in a plastic bag